

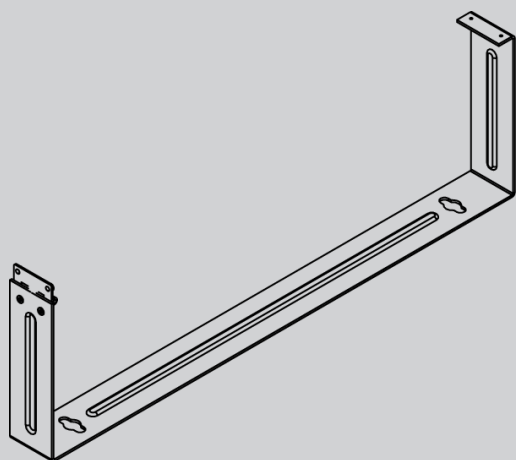


DESCRIPTION

1U Hinged Wall Mount Bracket, 19", Black

FEATURES

- Fits a standard 1U 19" patch panel
- Bracket made of 2mm thick steel, painted black
- Hinge made of 1.5mm thick steel, painted black
- Comes with 8 M5 screws (5mm x 15mm)

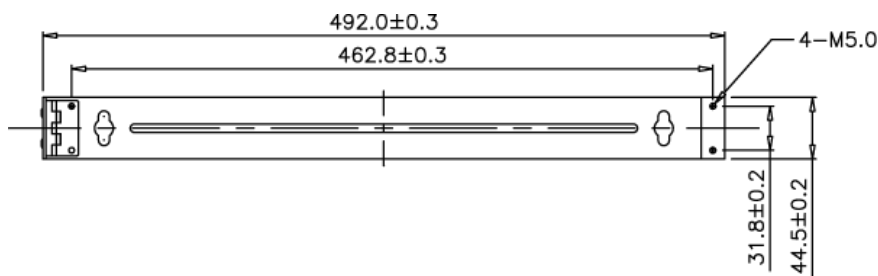


1U HINGED WALL MOUNT BRACKET

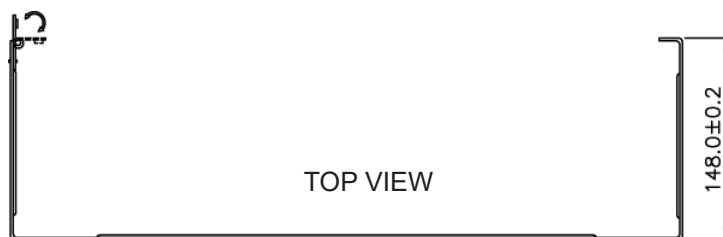
SKU: 046-388

Thickness	
Bracket ($\pm 0.1\text{mm}$)	2
Hinge ($\pm 0.1\text{mm}$)	1.5
Height (in)	1.75
Width (in)	19
Depth (in)	5.67
Weight (lb)	.52
Color	Black

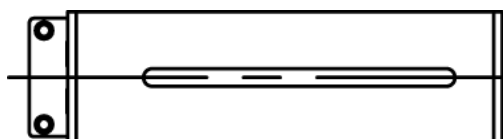
FRONT VIEW



TOP VIEW



SIDE VIEW



VERTICAL CABLE

951.696.7772 California

800.749.2447 Florida

845.391.8318 New York

www.verticalcable.com

Rev. 01/2015

Specs subject to change without notice.

It is the sole responsibility of the user to have the most current specs.