



CAT6A PATCH CABLE STP (SHIELDED)

SKU: 076-SERIES

Conductor

Size	26AWG
Construction	7/0.16±0.008mm

Insulation

Material	Foam-Skin PE
Diameter	08±0.02mm
Shield	Aluminum Foil
Braid	0.12±0.008mm /5*16=80# AL-MG

Jacket

Material	75A PVC UL94-V2
Outer Diameter	6.5±0.2mm
Concentric	≥80%

Connectors

RJ45	8P/8C Gold Plated
------	-------------------

Electrical Test

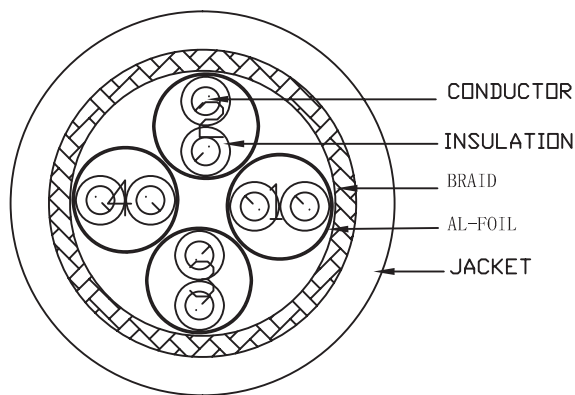
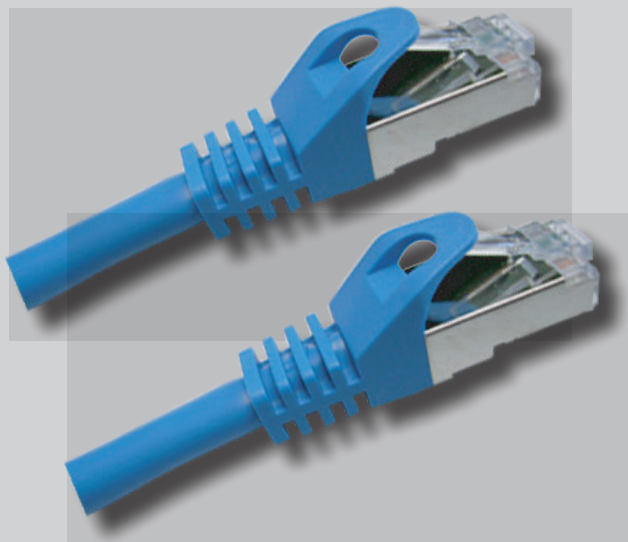
100% open short & miss wire test
Insulation resistance: DC 300V 3MΩ
Contact resistance: 3Ω
Impedance: 100±15 ohms

DESCRIPTION

Category-6A Shielded, Mold-Injection-Snagless Patch Cord, 26-AWG Stranded, PVC Jacket.

FEATURES

- Stranded Conductors
- Shielded RJ45 Modular Plugs
- 8P8C Gold Plated Pins
- 568B Wiring Color Code
- RoHS Compliant



VERTICAL CABLE

954 454-3554 Florida Office

951 696-7772 California Office

www.verticalcable.com

Rev. 11/2011

Subject to change without notice.