

# CAT5E RJ45 MODULAR PLUG SHIELDED (FEED THROUGH STYLE)

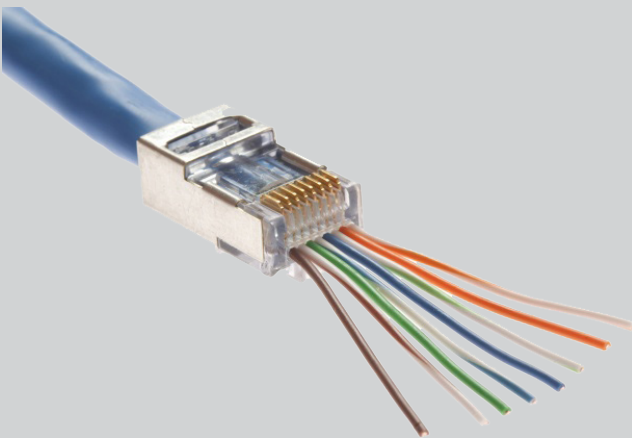


## DESCRIPTION

Category 5E, RJ45 Shielded Modular Connector, Feed Through.

## FEATURES

- Feed through design
- Fast and easy to terminate
- Easier sequence verification
- Gold plated terminal contact
- For solid and stranded cable
- Shielded for protection against EMI/RFI



**SKU: 011-019/EZF-100**

### Electrical

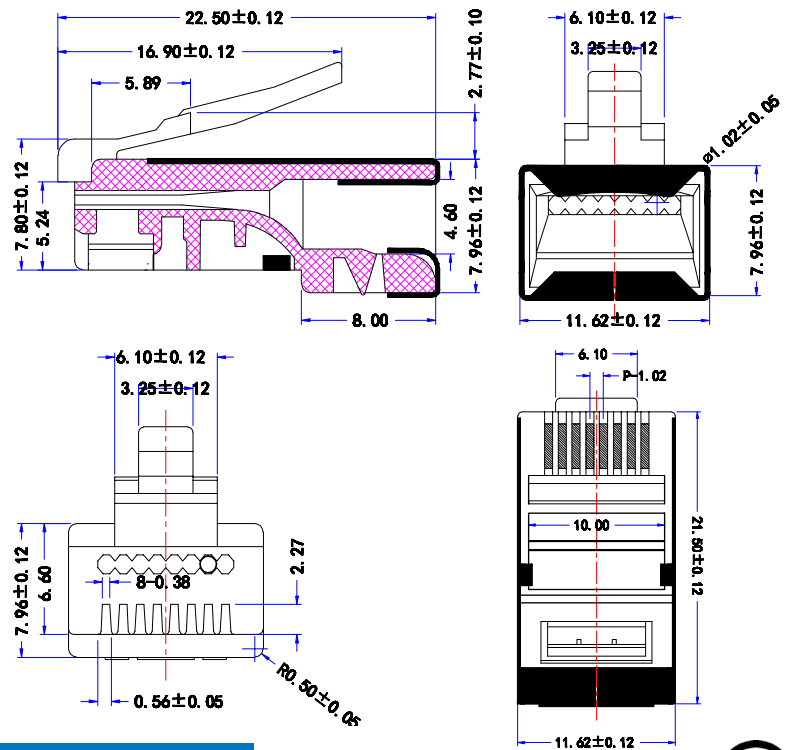
Voltage Rating	250 VAC RMS
Current Rating	2 Amps
Termination Resistance	35m Ω Max
Insulation Resistance	500m Ω

### Mechanical

Cable to Plug Tensile Strength	20 lbs
Durability	500 Cycles Min.

### Material

Housing	Polycarbonate UL94V-2
Shielded	Shield over housing
Contact Blade	Gold Plated (3 Prong)
Conductor Type	For Solid and Stranded Wire
Conductor Size	For 24AWG - 26AWG
Insulation Size	1.02mm max



**VERTICAL CABLE**  
954 454-3554 Florida Office  
951 696-7772 California Office

[www.verticalcable.com](http://www.verticalcable.com)

Rev. 06/2017  
Subject to change without notice.