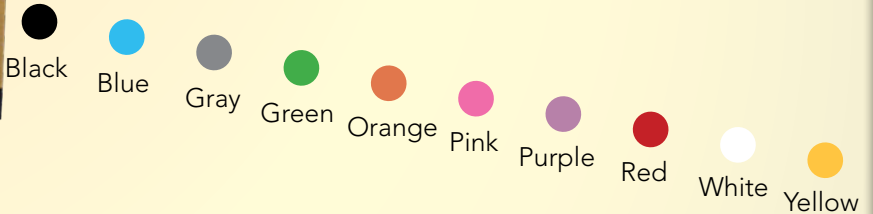
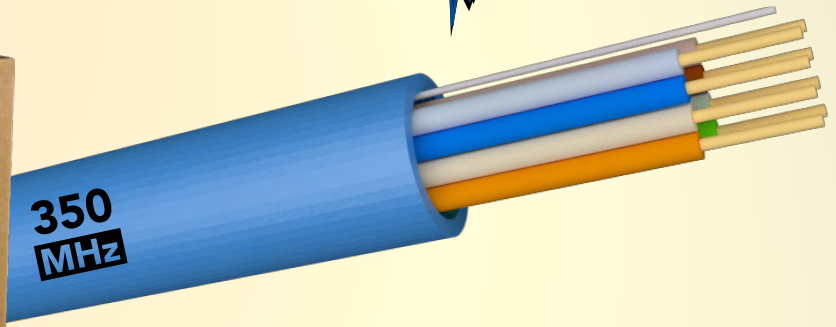
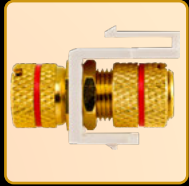
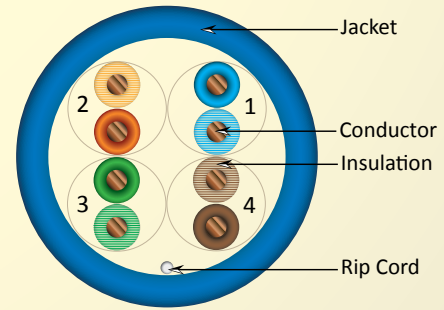
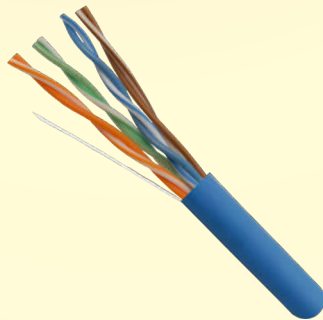


# CAT5E CMP Rated



**SKU: 056-461/P/BL**

Category-5E, CMP Rated, Blue, UTP, 24AWG, 8C Solid Bare Copper, 350MHz, 1000ft, Pull Box



- High-Performance Category-5E Data Cable
- 350Mhz Bandwidth for Data Applications
- Suitable for High-Speed Data Applications, Fast Ethernet and 155Mbps TP-PMD/CDDI
- Flame Retardant, Plenum Rated
- Unshielded Twisted Pair (UTP) Cable

- Easily Identified Color-Striped Pairs
- 24AWG Solid Bare Copper Conductors
- Exceeds TIA/EIA 568-C.2 specifications
- Excellent Attenuation and Crosstalk Characteristics
- UL Listed, RoHS Compliant, TAA Compliant
- 1000ft Pull Box



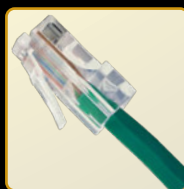
FULL LINE OF CAT5E PLENUM CABLE HERE



1 download free QR app on your phone or tablet  
2 scan this code to see the full line of CAT5E Plenum cable

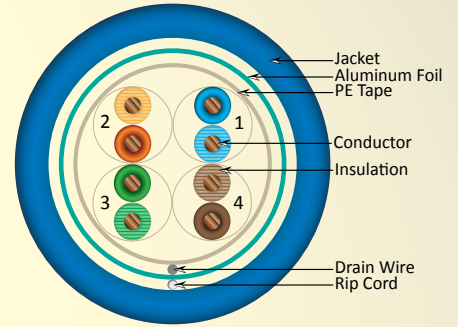
Vertical Cable ▶ CAT5E Series

www.verticalcable.com





## CATEGORY-5E 350MHz STP CMP RATED



**SKU: 057-476/S/P/BL**

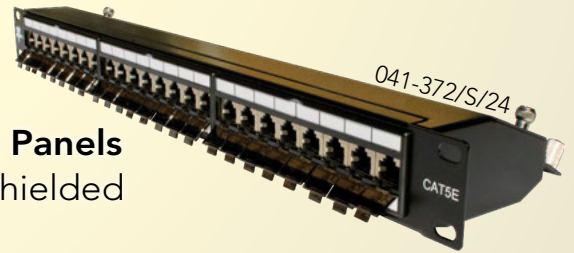
Category-5E, FEP Jacket, Blue, STP, 24AWG, 8C Solid Bare Copper, 350MHz, Plenum Rated, 1000ft, Pull Box

- High-Performance Data Communications Cable
- Suitable for 350MHz High-Speed Data Applications, Gigabit Ethernet, Fast Ethernet and 155Mbps TP-PMD/CDDI
- Designed for Indoor Installations
- Plenum Rated (CMP)
- Category-5E Shielded Twisted Pair (STP) Cable
- Easily Identified Color-Striped Pairs
- 24AWG Solid Bare Copper Conductors, 4-Pair
- Excellent Attenuation and Crosstalk Characteristics
- ANSI/TIA-568 C.2, ISO/IEC 2nd Edition 11801 Class D, CENELEC EN 50173-1
- Flame retardancy is verified to IEC 60332-1.
- UL Listed, RoHS Compliant
- Supplied in a 1000ft Pull Box

Blue    Gray    White

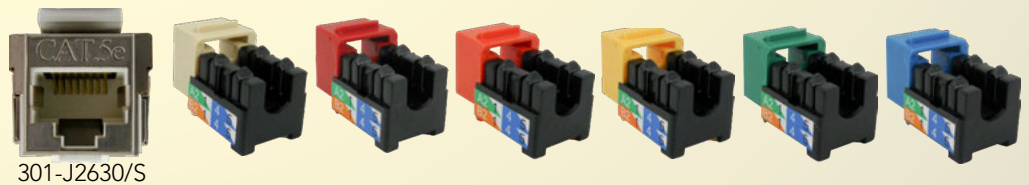


## OTHER CAT5E PRODUCTS IN STOCK



**CAT5E Patch Panels**  
Shielded/Unshielded

**CAT5E Jacks**  
Shielded/Unshielded



**CAT5E Surface Mounts**  
Shielded/Unshielded

