

# CAT6 JUNCTION BOX SPLICE BOX



**SKU: 040-372/C6J/WH**

## Material:

ABS, UL 94V-10  
IDC Housing: PC+Glass Fiber, UL 94V-2  
IDC Terminal: Phospor Bronze with Tin plating.  
PCB: FR4, UL 94V-0

## Performance

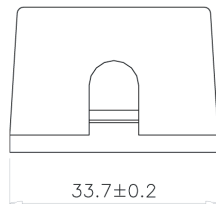
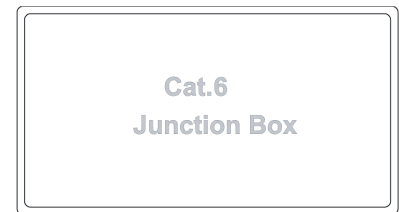
Suitable for 22-26 AWG solid wire  
Operating temperature: -10°C to 60°C  
ISO/IEC 11801, ANSI/TIA/EIA 568 B.2

## DESCRIPTION

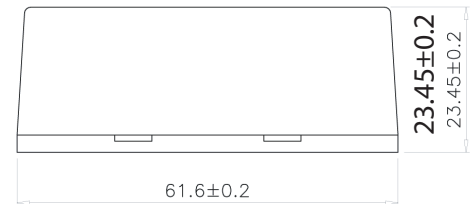
Cat6 Junction Box, 568A and 568B Standards, Compatible with 110 & Krone Termination tools.

## FEATURES

- High-impact ABS construction
- Screws, ties and adhesive tape included
- 110 & Krone type terminal blocks
- T568A & T568B color codes
- UL 94 V-0 Fire Retardant
- UL listed

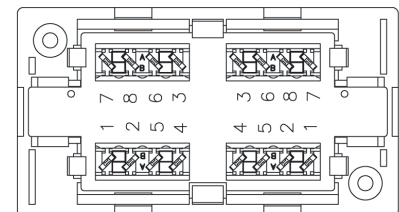


33.7±0.2



23.45±0.2  
23.45±0.2

61.6±0.2



**VERTICAL CABLE**

954 454-3554 Florida Office  
951 696-7772 California Office



[www.verticalcable.com](http://www.verticalcable.com)

Rev. 11/2017  
Subject to change without notice.